






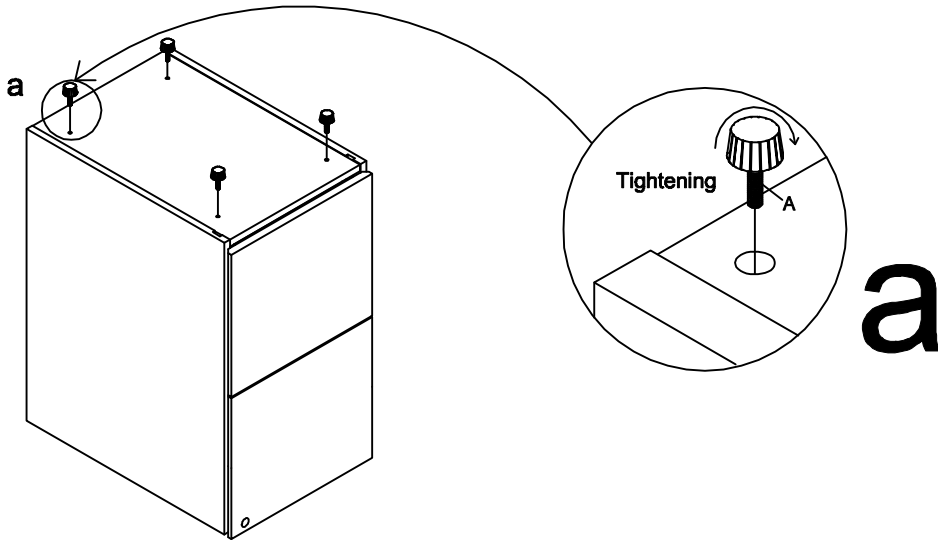


# Assembly Instructions MODEL NO.:MR22FF

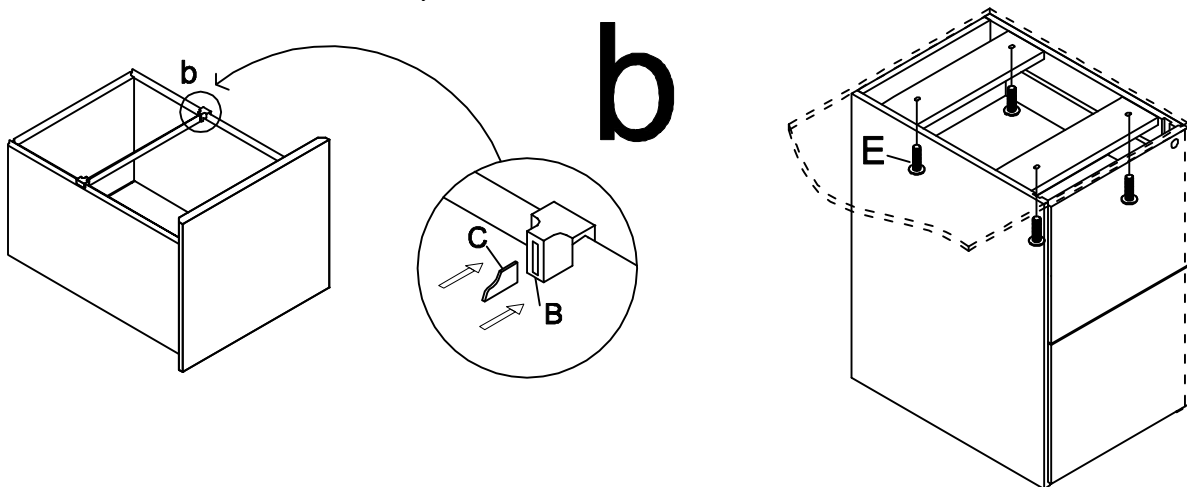
FILE/FILE PEDESTAL V02/10-12

GLIDE	TUNOO1FC	TUNOO2AB	KEYS	TUNO27SC
<b>A</b>  Glide M6*25 4 Pcs	<b>B</b>  File Clip 4 Pcs	<b>C</b>  297*11.5*2.5mm Aluminium Bar 2 Pcs	<b>D</b>  Keys 1 Set	<b>E</b>  Screw M6*30MM 4 Pcs+1 Pcs

## STEP 1



## STEP 2



### IMPORTANT NOTE

- .It is advisable to assemble unit on a carpet to avoid scratch.
- .Check to be sure that you have all parts and hardware.
- .Don't tighten all screws/bolts until all completely assembled
- .It is recommended to require 2 persons to complete the assembling.

### CARE & CLEANING

Wood Veneer Finishes: Following the direction of the grain ,wipe with a soft damp cloth ,then a soft dry cloth. For heavier soils, try a mild soap solution (do not use spray polishes, solvents or products containing ammonia), then repeat the above steps.

Remove drawers to attach to top of shell use 4(E) M6\*30mm screws provided