



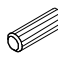




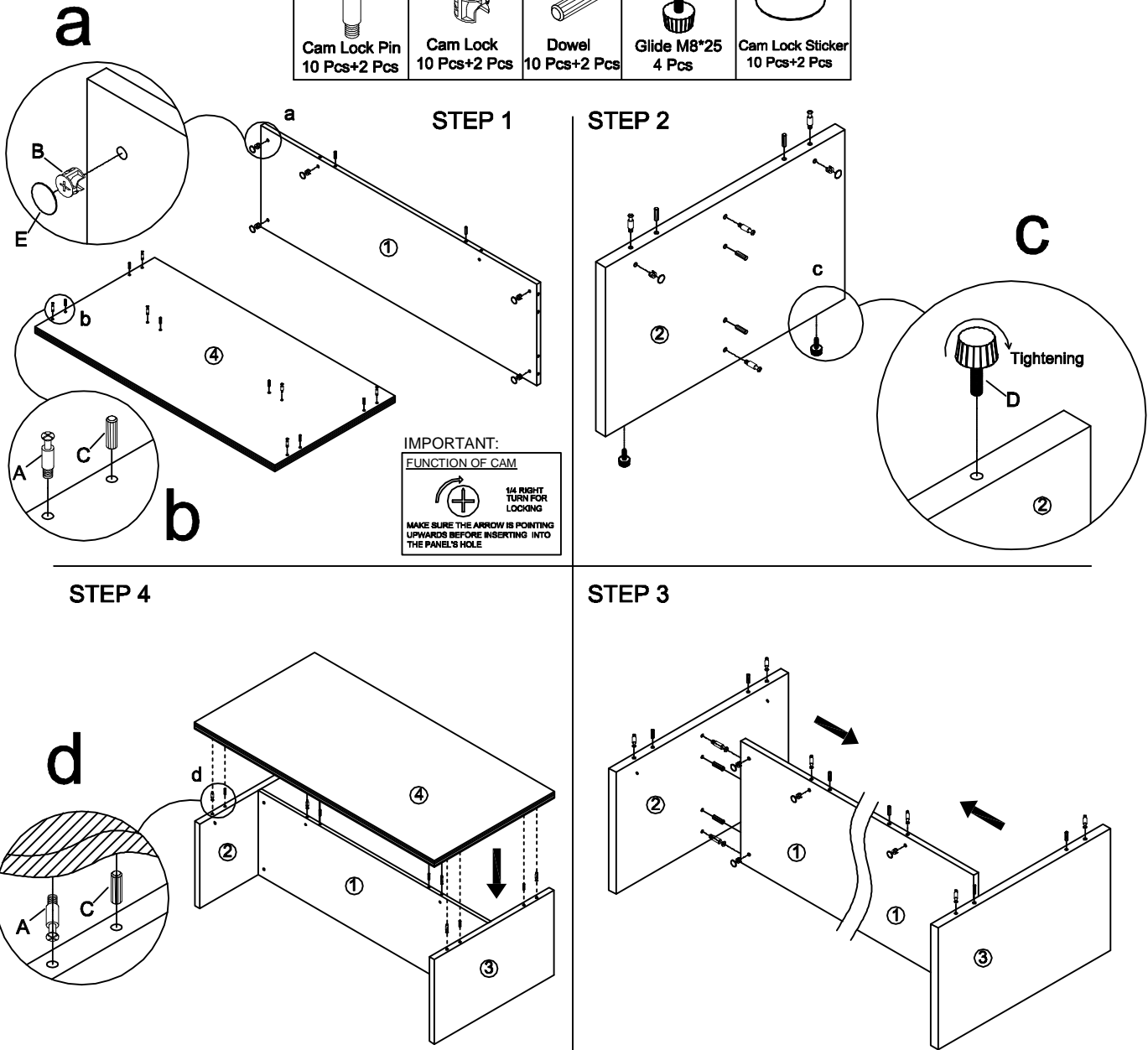
Assembly Instructions

MODEL NO.:VF4824CT

COFFEE TABLE

V02/10-12

	CONC11	DOWEL	GLIDE	CAM COVER
A	B	C	D	E
				
Cam Lock Pin 10 Pcs+2 Pcs	Cam Lock 10 Pcs+2 Pcs	Dowel 10 Pcs+2 Pcs	Glide M8*25 4 Pcs	Cam Lock Sticker 10 Pcs+2 Pcs



IMPORTANT NOTE

- .It is advisable to assemble unit on a carpet to avoid scratch.
- .Check to be sure that you have all parts and hardware.
- .Don't tighten all screws/bolts until all completely assembled
- .It is recommended to require 2 persons to complete the assembling.

CARE&CLEANING

Wood Veneer Finishes: Following the direction of the grain,wipe with a soft damp cloth, then a soft dry cloth. For heavier soils, try a mild soap solution (do not use spraypolishes, solvents or products containing ammonia), then repeat the above steps.