

Seating *to go* new for 2010



OTG2700B



Luxhide® Executive Chair

- High back design with soft black Luxhide upholstery and mock leather trim
- Pneumatic seat height adjustment
- Comfortable polyurethane “reverse curve” arms
- Single position tilt lock with tilt tension adjustment
- Scuff resistant arched molded base with twin wheel carpet casters
- Dimensions: 28”D x 27”W x 42”H

* Luxhide is a bonded leather consisting of 15% leather fibers and 85% other materials.



OTG2701B



Luxhide® Executive Chair

- Mid back design with soft black Luxhide upholstery and mock leather trim
- Pneumatic seat height adjustment
- Comfortable polyurethane “reverse curve” arms
- Single position tilt lock with tilt tension adjustment
- Scuff resistant arched molded base with twin wheel carpet casters
- Dimensions: 28”D x 27”W x 39”H

* Luxhide is a bonded leather consisting of 15% leather fibers and 85% other materials.



OTG2787B



Luxhide® Executive Chair

- High back design with soft black Luxhide upholstery and mock leather trim
- Pneumatic seat height adjustment
- Attractive charcoal grey arms and base
- Fixed height molded arms with padded armrests
- Single position tilt lock with tilt tension adjustment
- Scuff resistant arched molded base with twin wheel carpet casters
- Dimensions: 28”D x 26.5”W x 44”H

* Luxhide is a bonded leather consisting of 15% leather fibers and 85% other materials.



OTG2788B



Luxhide® Executive Chair

- High back design with soft black Luxhide upholstery and mock leather trim
- Pneumatic seat height adjustment
- Black molded arms with upholstered armcaps
- Single position tilt lock with tilt tension adjustment
- Scuff resistant arched molded base with twin wheel carpet casters
- Dimensions: 27.5”D x 25.5”W x 44”H

* Luxhide is a bonded leather consisting of 15% leather fibers and 85% other materials.



OTG2747-QL10 (Black)

OTG2747-QL11 (Charcoal Grey)

Stack Chair with Arms

- Durable, patterned black (shown) or charcoal grey fabric upholstery
- Black epoxy powder coated frame
- Black molded arms
- Can be stacked 5 high on the floor or 5 high on available dolly OTG2749
- 1 chair per carton
- Dimensions: 22.5”D x 23”W x 32”H



OTG2748-QL10 (Black)

OTG2748-QL11 (Charcoal Grey)

Armless Stack Chair

- Durable, patterned black (shown) or charcoal grey fabric upholstery
- Black epoxy powder coated frame
- Can be stacked 5 high on the floor or 5 high on available dolly OTG2749
- 1 chair per carton
- Dimensions: 22.5”D x 19.5”W x 32”H



OTG2782B

Luxhide® Guest Chair

- Mid back design with soft black Luxhide upholstery and mock leather trim
- Attractive sled-based design
- Upholstered arm rests
- Dimensions: 25.5"D x 24.5"W x 36.5"H



* Luxhide is a bonded leather consisting of 15% leather fibers and 85% other materials.



OTG11710-QL11 (Charcoal Grey)



OTG11720-QL10 (Black)

OTG11720-QL11 (Charcoal Grey)

Occasional Chair with Arms

- Durable, patterned black (shown) or grey fabric upholstery
- Black epoxy powder coated frame
- Black molded arms
- Does not stack
- 1 chair per carton
- Shipped fully assembled
- Dimensions: 33.75"D x 22.5"W x 34.5"H



OTG2749

Dolly

- Black epoxy powder coated steel frame
- Carpet casters allow easy movement
- Used for models OTG2747 and OTG2748
- Allows chairs to be stacked 5 high
- Dimensions: 18.75"D x 23.25"W x 8.5"H



OTG11710-QL10 (Black)

Multi Function Chair

- Durable patterned black (shown left) or charcoal grey (shown above) fabric upholstery
- Infinite seat tilt lock with tilt tension adjustment
- Back angle adjustment
- Back height adjustment via internal ratchet
- Pneumatic seat height adjustment
- Scuff resistant arched molded base with twin wheel carpet casters
- Height adjustable armrests with in and out adjustment feature
- Forward tilt control
- Dimensions: 24.5"D x 26"W x 42"H





Product available for presentation in many of GLOBAL's 30 showrooms throughout the United States. Please inquire with your local representative.

Offices to Go - A Division of Global - The Total Office
 17 West Stow Road P.O. Box 562 Marlton, New Jersey 08053
 Tel (856) 596-3390 (800) 220-1900 Fax (856) 596-5684
www.officestogousa.com

In addition to the stocked textiles (QL10 Black and QL11 Charcoal Grey) on most fabric "T" chairs, most can be upholstered using any of the fabric selections shown below. An upcharge applies except for colors QL10 Black, QL11 Charcoal Grey, QL14 Navy and QL16 Wine (and 70 Black Vinyl on selected chairs).

QUILT



QL10 Black (stocked)



QL11 Charcoal Grey
(stocked on many chairs)



QL12 Violet



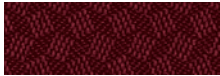
QL13 Poppy



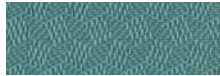
QL14 Navy (standard)



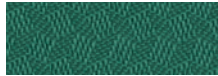
QL15 Marine



QL16 Wine (standard)



QL17 Mint



QL18 Forest



QL19 Silver

JENNY



JN01 Midnite



JN02 Ebony



JN03 Slate



JN04 Russet



JN05 Canyon



JN06 Teal



JN07 Vermillion



JN08 Admiral



JN09 Spruce



JN11 Charcoal

SPRINKLE



S101 Cabernet



S102 Plum



S103 Barley



S104 Copper



S106 Sapphire



S107 Jade



S108 Stone



S109 Cobalt



S110 Black



S111 Graphite

PEBBLES



PB01 Clay



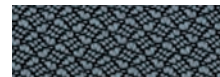
PB02 Fawn



PB03 Sea Side



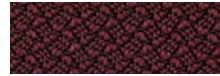
PB04 Stone



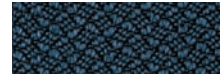
PB05 Marine



PB06 Atrium



PB07 Rhapsody



PB08 Ocean



PB09 Asphalt

TIME



T601 Leaf



T602 Picante



T603 Bamboo



T604 Fudge



T605 Aqua



T606 Sky



T607 Atmosphere



T608 Bordeaux



T609 Steel



T610 Midnight

SHARD



SH11 Garnet



SH12 Bullion



SH13 Lagoon



SH14 Cypress



SH15 Java



SH16 Tempest



SH17 Arctic



SH18 Carbon